

BELLOSTA

LISTINO MODERNO | 80.2013

CURA, ATTENZIONE, TECNICHE D'AVANGUARDIA, GUSTO, STILE ED ESPERIENZA, SONO GLI INGREDIENTI DELLE COLLEZIONI D'AUTORE BELLOSTA RUBINETTERIE

GRAZIE PER LA FIDUCIA

PRODOTTO INTERAMENTE IN ITALIA



CARE, ATTENTION, AVANTGARDE TECHNIQUE, TASTE, STYLE AND EXPERIENCE ARE THE INGREDIENTS OF THE BELLOSTA RUBINETTERIE COLLECTIONS

THANKS FOR THE TRUST

COMPLETELY MADE IN ITALY







LAVABO	484
BIDET	487
DOCCIA	
incasso	488
incasso termostatico	490
esterno	492
esterno termostatico	493
VASCA	494
COMPLEMENTI	497
COMPOSIZIONI DOCCIA	500
INDICE RICAMBI	501

FINITURE DI SERIE - COLLEZIONE BEETHOVEN

01 | cromo
chrome

B-COLORS!

02 | cromo / oro
chrome / gold06 | rame vecchio
old copper10 | verderame
verdigris14 | bianco
white18 | nero / cromo
black / chrome22 | verdino / cromo
light green / chrome26 | cromo sat / cromo
satin chrome / chrome30 | nickel c/prot
prot nickel34 | cromo spazzolato
brushing chrome54 | cromo / leva cromo sat
chrome / sat chrome lever58 | verdino
light green63 | nickel
nickel69 | argento opaco
mat silver03 | oro / argento
gold / silver07 | vecchio argento
old silver11 | nero antracite
anthracite black15 | bianco / oro
white / gold19 | nero
black23 | marrone / cromo
brown / chrome27 | cromo sat / oro
satin chrome / gold31 | nickel c/prot / oro
prot nickel / gold35 | nickel spazzolato
brushing nickel55 | nickel sat / oro
satin nickel / gold59 | marrone
brown66 | bianco opaco
mat white71 | oro opaco
mat gold04 | dorato
gold08 | canna fucile
gun barrel12 | ottone lucido
polished brass16 | bianco / cromo
white / chrome20 | avorio / cromo
ivory / chrome24 | arancio / cromo
orange / chrome28 | nickel satinato
satin nickel32 | nickel c/prot / cromo
prot nickel / chrome36 | nickel spazzolato / oro
brushing nickel / gold56 | avorio
ivory60 | arancio
orange67 | nero opaco
mat black72 | bronzo opaco
mat bronze05 | bronzo satinato
satin bronze09 | canna fucile / oro
gun barrel / gold13 | ottone naturale
natural brass17 | nero / oro
black / gold21 | azzurro / cromo
light blue / chrome25 | rosso / cromo
red / chrome29 | nickel sat / cromo
satin nickel / chrome33 | cromo satinato
satin chrome53 | canna fucile / cromo
gun barrel / chrome57 | azzurro
light blue61 | rosso
red68 | rame opaco
mat copper75 | dorato spazzolato
brushing gold

progetto
SUMISURA

Per ogni esigenza progettuale, è possibile richiedere una finitura non presente di serie nella collezione scelta, grazie al team PROGETTO SU MISURA, che realizzerà ad hoc il prodotto.

I tecnici Bellosta Rubinetterie sono, inoltre, a disposizione di architetti e designer, per offrire un servizio esclusivo, personalizzando gli elementi in funzione di specifiche richieste estetiche o problematiche legate a vincoli progettuali, e per verificare la fattibilità attraverso opportuni studi CAD e sviluppare il disegno tecnico del prodotto speciale richiesto.

Per informazioni e richieste PROGETTI SU MISURA:
ufficiotecnico@bellostarubinetterie.com

For every requirements is possible to ask a finished that is not presented in the catalogue thanks to the team of PROGETTO SU MISURA, that will make the project.

The Bellosta Rubinetterie technician are available for designers and architects, to offer this service to all designers, making components to measure to meet specific, functional or design-dictated requirements, and to verify the possibility of making of the project by CAD used and technical scheme.

For informations and PROJECTS "SU MISURA" requests:
ufficiotecnico@bellostarubinetterie.com

CONSIGLIO TECNICO:

tutti i miscelatori della collezione BEETHOVEN vengono collaudati nel loro funzionamento al momento dell'assemblaggio. Per garantire la durata delle cartucce nel tempo, si consiglia di spurgare bene l'impianto idraulico prima del montaggio (per rimuovere eventuali detriti) e di installare:

Rubinetti sottolavabo con filtro art. 7720 (vedi pag. 857)

N.B.:

Qualora il piano lavabo avesse uno spessore superiore a 5 cm specificare misura al momento dell'ordine.

TECHNICAL ADVICE:

all mixers of the BEETHOVEN collection are perfectly tested.

To guarantee the perfect functionality of the cartridge for a long time, we advise to clean the sanitary plant before installing the mixer.

Moreover we advise to install:

Angle valve with filter art. 7720 (see page 857)

Attention:

If the lavatory top is more than cm 5 thick, please point it out when placing the order.

COMPLEMENTI DOCCIA:

tutti i miscelatori della collezione BEETHOVEN possono essere abbinati ai soffioni del programma docce REVIVRE

SHOWER COMPLEMENTS:

all mixers of the collection BEETHOVEN, could be linked at the ceiling of the Revivre shower programm

LAVABO/BIDET



Art. 7705/7/S p. 484
Miscelatore per lavabo/ bidet s/salterello
Single lever mixer for basin/ bidet without pop-up waste



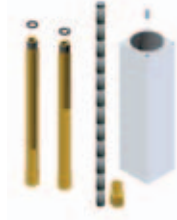
Art. 7705/P/S p. 484
Miscelatore per lavabo s/salterello c/bocca erogazione prolungata
Single lever mixer for basin with extended spout without pop-up waste



Art. 774001 p. 484
Prolunga sovrapiano per lavabo \varnothing 38 mm, altezza 50 mm
Extension for higher level basin \varnothing 38, high mm 50



Art. 774002 p. 484
Prolunga sovrapiano per lavabo \varnothing 38 mm, altezza 100 mm
Extension for higher level basin \varnothing 38, high mm 100



Art. 774003 p. 484
Prolunga sovrapiano per lavabo \varnothing 38 mm, altezza 150 mm
Extension for higher level basin \varnothing 38, high mm 150



Art. 7705/P/S/T p. 485
Miscelatore per lavabo s/salterello c/bocca erogazione prolungata c/attacco a pavimento
Single lever mixer for basin with extended spout and floor connection without pop-up waste



Art. 7705/3 p. 485
Miscelatore per lavabo a muro
Wall mounted single lever mixer for basin



Art. 7705/3/A p. 485
Miscelatore per lavabo a muro su piastra
Wall mounted single lever mixer for basin on plate



Art. 7705/R/A p. 486
Miscelatore comando remoto per lavabo s/salterello
Single lever mixer with remote control for basin without pop-up waste



Art. 7705/R/B p. 486
Miscelatore incasso comando remoto per lavabo
Built-in single lever mixer with remote control for basin



Art. 7705/1/A p. 486
Bocca erogazione da 170 mm per lavabo sovrapiano
Higher level basin spout mm 170



Art. 7705/1/B p. 486
Bocca erogazione da 220 mm per lavabo sovrapiano
Higher level basin spout mm 220



Art. 7705/1/C p. 487
Bocca erogazione da 270 mm per lavabo sovrapiano
Higher level basin spout mm 270



Art. 7705/26 p. 487
Bocca erogazione da pavimento per lavabo
Floor spout for basin



Art. 7705/7/S p. 487
Miscelatore per lavabo/ bidet s/salterello
Single lever mixer for basin/ bidet without pop-up waste

DOCCIA: incasso



Art. 7721 p. 488
Miscelatore incasso 1 OUT
Built-in single lever mixer 1 OUT



Art. 7700 p. 488
Miscelatore incasso c/ pulsante 2 OUT
Built-in single lever mixer with diverter pulse 2 OUT



Art. 7703/2/1 p. 488
Deviatore incasso completo due uscite
Complete two ways built-in diverter



Art. 7703/3/1 p. 489
Deviatore incasso completo tre uscite
Complete three ways built-in diverter



Art. 7703/4/1 p. 489
Deviatore incasso completo quattro uscite
Complete four ways built-in diverter

DOCCIA: incasso termostatico



Art. 0912/P p. 490
Miscelatore incasso termostatico 1 OUT bassa portata
Built in thermostatic mixer 1 OUT less rate



Art. 0912/2/P p. 490
Miscelatore incasso termostatico 2 OUT bassa portata
Built in thermostatic mixer 2 OUT less rate



Art. 0912/3/P p. 490
Miscelatore incasso termostatico 3 OUT bassa portata
Built in thermostatic mixer 3 OUT less rate



Art. 0912/4/P p. 491
Miscelatore incasso termostatico 4 OUT bassa portata
Built in thermostatic mixer 4 OUT less rate

DOCCIA: esterno



Art. 7709/1 p. 492
Miscelatore esterno per doccia s/duplex completo
Exposed single lever mixer for shower without complete shower kit



Art. 7709/4 p. 492
Miscelatore esterno per doccia c/stelo e soffione piatto
Exposed single lever mixer for shower with flat shower head and pipe



Art. 7709/5/1 p. 492
Miscelatore esterno per doccia c/stelo e soffione piatto, c/ deviatore e scorrevole
Exposed shower mixer with high shower plate with sliding shower kit and flat shower head



Art. 6513/4 p. 492
Curva presa d'acqua per doccia c/stelo e soffione
Water connector for high shower plate



Art. 7513/5/1 p. 492
Curva presa acqua per doccia c/stelo e soffione, c/ deviatore e scorrevole
Water connector for high shower plate with sliding shower kit and shower head

DOCCIA: esterno termostatico



Art. 7711/1 p. 493
Miscelatore termostatico esterno per doccia s/ duplex completo
Exposed thermostatic mixer for shower without complete shower kit



Art. 7711/4 p. 493
Miscelatore termostatico esterno per doccia c/stelo e soffione
Exposed thermostatic mixer for shower with shower head

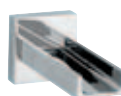


Art. 7711/5/1 p. 493
Miscelatore termostatico esterno per doccia c/stelo e soffione c/dev. e scorrevole
Exposed thermostatic mixer for shower with sliding shower kit and shower head

VASCA



Art. 7700 p. 494
Miscelatore incasso c/ pulsante 2 OUT
Built-in single lever mixer with diverter pulse 2 OUT



Art. 7703 p. 494
Bocca erogazione a muro per vasca
Wall spout for bath



Art. 7703/AP p. 494
Bocca erogazione a muro ad alta portata per vasca
High flow rate wall spout for bath



Art. 7701/2/A p. 495
Miscelatore per bordo vasca 4 fori
4 holes bath mixer to be fitted on bath rim



Art. 7701/2/P/A p. 495
Miscelatore per bordo vasca 4 fori su piastra
4 holes bath mixer on plate to be fitted on bath rim

VASCA



Art. 7701/20/A p. 495
Miscelatore per bordo vasca 3 fori s/bocca erogazione
3 holes bath mixer without spout to be fitted on bath rim



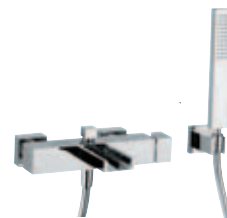
Art. 7701/20/P/A p. 495
Miscelatore per bordo vasca 3 fori su piastra s/bocca erogazione
3 holes bath mixer on plate without spout to be fitted on bath rim



Art. 7701/26 p. 495
Bocca erogazione da pavimento per vasca
Floor spout for bath



Art. 7701/4 p. 496
Miscelatore per vasca c/ attacco a pavimento c/ bocca erogazione
Single lever mixer for bath with floor spout



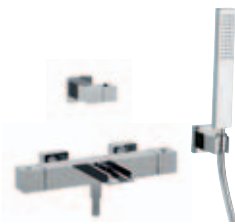
Art. 7701/A p. 496
Miscelatore esterno per vasca c/gancio fisso completo
Exposed single lever mixer for bath with shower kit (fixed hook)



Art. 7701/B p. 496
Miscelatore esterno per vasca c/gancio fisso completo e duplex
Exposed single lever mixer for bath with shower kit (fixed hook) and movable hook



Art. 7701/A/TRM p. 496
Miscelatore TERMOSTATICO esterno per vasca c/gancio fisso completo
THERMOSTATIC exposed bath mixer for bath with complete shower kit (fixed hook)



Art. 7701/B/TRM p. 496
Miscelatore TERMOSTATICO esterno per vasca c/gancio fisso completo e duplex
THERMOSTATIC exposed bath mixer for bath with shower kit (fixed hook) and movable hook

COMPLEMENTI



Art. 7503/1/A p. 497
Gancio incasso fisso completo
Complete shower kit (fixed hook)



Art. 7503/1 p. 497
Duplex incasso completo
Complete shower kit (movable hook)



Art. 7730 p. 497
Saliscendi completo c/ presa d'acqua
Complete wall pipe with water connection



Art. 7730/1 p. 497
Saliscendi
Wall pipe



Art. 7708/D p. 497
Rubinetto incasso da 1/2" destro
Right built-in stop cock 1/2"



Art. 7708/1/D p. 498
Rubinetto incasso da 3/4" destro
Right built-in stop cock 3/4"



Art. 7740 p. 498
Passo rapido da 3/4"
Built-in rapid flow cock 3/4"

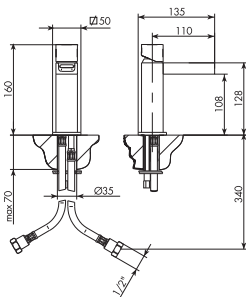


Art. 7740/1 p. 499
Passo rapido da 1"
Built-in rapid flow cock 1"



Art. 7732/2 p. 499
Saracinesca da 3/4"
Gate valve 3/4"

Art. 7705/7/S



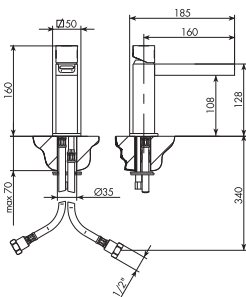
Miscelatore per lavabo/bidet s/salterello*
Single lever mixer for basin/bidet without pop-up waste*

01-7705/7/S **cromato**

*Per UP/DOWN vedi pag. 845/846 *For UP/DOWN see page 845/846

! PER LAVABI IN CRISTALLO - OPTIONAL art. 884026: tubetto per mix con riduttore di portata 3L, vedi pag. 860
! FOR CRISTAL BASIN - OPTIONAL art. 884026: pipe for mixer with 3L flow reducer, see page 860

Art. 7705/P/S



Miscelatore per lavabo s/salterello* c/bocca erogazione prolungata
Single lever mixer for basin with extended spout without pop-up waste*

01-7705/P/S **cromato**

*Per UP/DOWN vedi pag. 845/846 *For UP/DOWN see page 845/846

! PER LAVABI IN CRISTALLO - OPTIONAL art. 884026: tubetto per mix con riduttore di portata 3L, vedi pag. 860
! FOR CRISTAL BASIN - OPTIONAL art. 884026: pipe for mixer with 3L flow reducer, see page 860

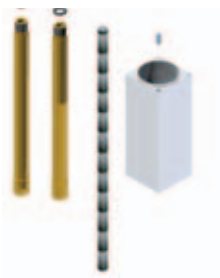
Art. 774001



Prolunga sovrapiano per lavabo \varnothing 38 mm, altezza 50 mm
Extension for higher level basin \varnothing 38, high mm 50

01-774001 **cromato**

Art. 774002



Prolunga sovrapiano per lavabo \varnothing 38 mm, altezza 100 mm
Extension for higher level basin \varnothing 38, high mm 100

01-774002 **cromato**

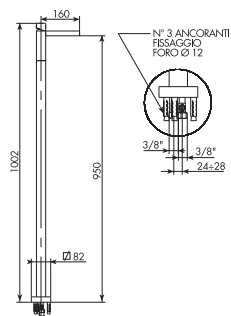
Art. 774003



Prolunga sovrapiano per lavabo \varnothing 38 mm, altezza 150 mm
Extension for higher level basin \varnothing 38, high mm 150

01-774003 **cromato**

Art. 7705/P/S/T

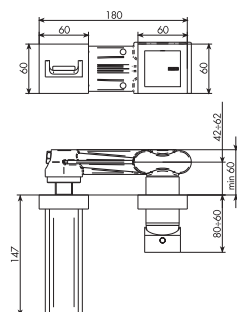
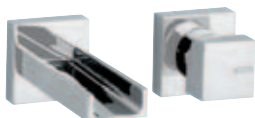


Miscelatore per lavabo s/salterello* c/bocca erogazione prolungata c/attacco a pavimento
*Single lever mixer for basin with extended spout and floor connection without pop-up waste**

01-7705/P/S/T **cromato**

*Per UP/DOWN vedi pag. 845/846 *For UP/DOWN see page 845/846

Art. 7705/3



Miscelatore per lavabo a muro
Wall mounted single lever mixer for basin

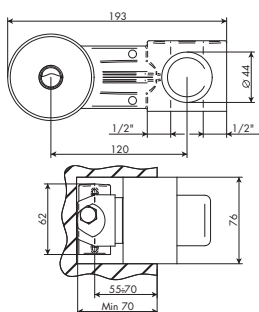
01-7705/3 **cromato**

*Per UP/DOWN vedi pag. 845/846 *For UP/DOWN see page 845/846

Art. 7705/3/E

Parti esterne per lavabo a muro
External parts for wall mounted single lever mixer for basin

01-7705/3/E **cromato**

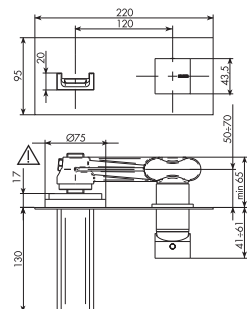


Art. 884069

Corpo incasso per lavabo a muro completo
Complete built-in parts for wall mounted single lever mixer for basin

01-884069 **cromato**

Art. 7705/3/A



Miscelatore per lavabo a muro su piastra
Wall mounted single lever mixer for basin on plate

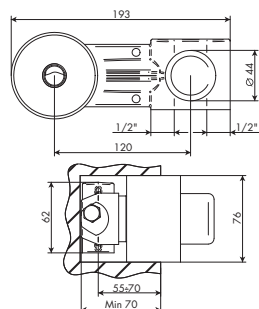
01-7705/3/A **cromato**

*Per UP/DOWN vedi pag. 845/846 *For UP/DOWN see page 845/846

Art. 7705/3/A/E

Parti esterne per lavabo a muro su piastra
External parts for wall mounted single lever mixer for basin

01-7705/3/A/E **cromato**

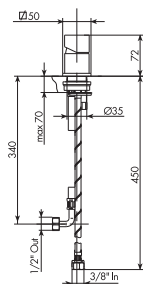


Art. 884069

Corpo incasso per lavabo a muro completo
Complete built-in parts for wall mounted single lever mixer for basin

01-884069 **cromato**

Art. 7705/R/A

**Miscelatore comando remoto per lavabo s/salterello***

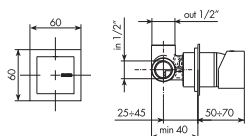
Single lever mixer with remote control for basin without pop-up waste*

01-7705/R/A **cromato**

*Per UP/DOWN vedi pag. 845/846 *For UP/DOWN see page 845/846

PER BOCHE DA SOFFITTO, VEDI PAG. 207-208**FOR CEILING SPOUTS SEE PAGE 207-208**

Art. 7705/R/B

**Miscelatore incasso comando remoto per lavabo***

Built-in single lever mixer with remote control for basin*

01-7705/R/B **cromato**

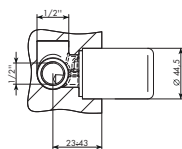
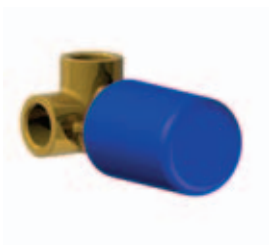
*Per UP/DOWN vedi pag. 845/846 *For UP/DOWN see page 845/846

PER BOCHE DA SOFFITTO, VEDI PAG. 207-208**FOR CEILING SPOUTS SEE PAGE 207-208**

Art. 7705/R/B/E

Parti esterne per miscelatore incasso comando remoto per lavabo

External parts for built-in single lever mixer with remote control for basin

01-7705/R/B/E **cromato**

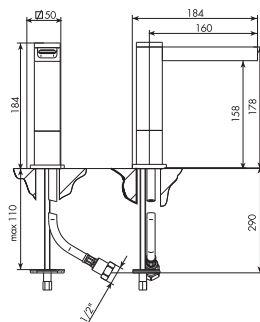
Art. 104033

Corpo incasso per lavabo a muro completo

Complete built-in parts for wall mounted single lever mixer for basin

01-104033 **cromato**

Art. 7705/1/A

**Bocca erogazione da 170 mm per lavabo sovrappiano***

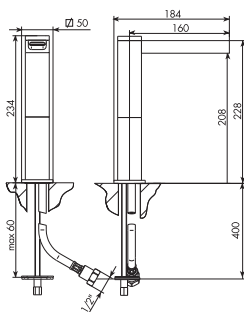
Higher level basin spout mm 170*

01-7705/1/A **cromato**

*Per UP/DOWN vedi pag. 845/846 *For UP/DOWN see page 845/846

! PER LAVABI IN CRISTALLO - OPTIONAL art. 884026: tubetto per mix con riduttore di portata 3L, vedi pag. 860**! FOR CRISTAL BASIN - OPTIONAL** art. 884026: pipe for mixer with 3L flow reducer, see page 860

Art. 7705/1/B

**Bocca erogazione da 220 mm per lavabo sovrappiano***

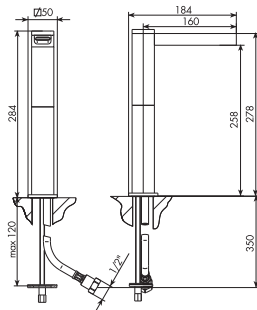
Higher level basin spout mm 220*

01-7705/1/B **cromato**

*Per UP/DOWN vedi pag. 845/846 *For UP/DOWN see page 845/846

! PER LAVABI IN CRISTALLO - OPTIONAL art. 884026: tubetto per mix con riduttore di portata 3L, vedi pag. 860**! FOR CRISTAL BASIN - OPTIONAL** art. 884026: pipe for mixer with 3L flow reducer, see page 860

Art. 7705/1/C



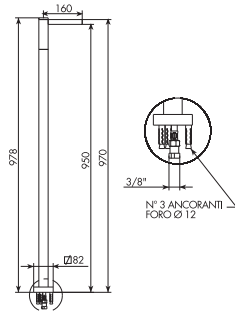
Bocca erogazione da 270 mm per lavabo sovrappiano*
Higher level basin spout mm 270*

01-7705/1/C **cromato**

*Per UP/DOWN vedi pag. 845/846 *For UP/DOWN see page 845/846

! PER LAVABI IN CRISTALLO - OPTIONAL art. 884026: tubetto per mix con riduttore di portata 3L, vedi pag. 860
! FOR CRISTAL BASIN - OPTIONAL art. 884026: pipe for mixer with 3L flow reducer, see page 860

Art. 7705/26

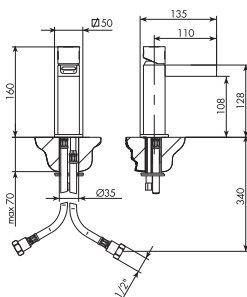


Bocca erogazione da pavimento per lavabo*
Floor spout for basin*

01-7705/26 **cromato**

*Per UP/DOWN vedi pag. 845/846 *For UP/DOWN see page 845/846

Art. 7705/7/S



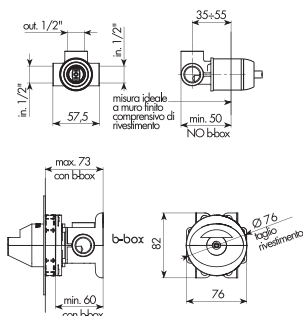
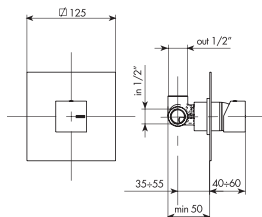
Miscelatore per lavabo/bidet s/salterello*

Single lever mixer for basin/bidet without pop-up waste*

01-7705/7/S **cromato**

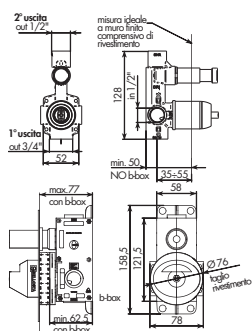
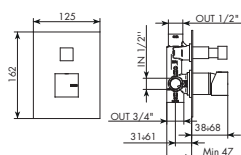
*Per UP/DOWN vedi pag. 845/846 *For UP/DOWN see page 845/846

Art. 7721


Miscelatore incasso 1 OUT
Built-in single lever mixer 1 OUT
01-7721 **cromato****Art. 7721/E**
Parti esterne per miscelatore incasso 1 OUT
External parts for built-in single lever mixer 1 OUT
01-7721/E **cromato****Art. 104018°**
Corpo incasso 1 OUT attacchi ingresso acqua da 1/2"
Built-in part 1 OUT with 1/2" water connection
01-104018 **cromato**

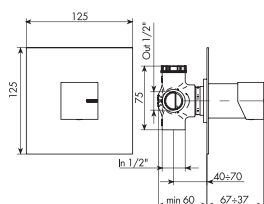
° compatibile con tutte le collezioni escluso tutti i Funtanin, tutti gli F-vogue e Krocus
 ° suitable for all collections except all articles of the Funtanin, F-vogue and Krocus serie

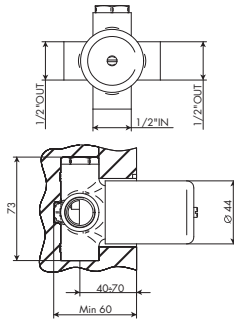
Art. 7700


Miscelatore incasso c/ pulsante 2 OUT
Built-in single lever mixer with diverter pulse 2 OUT
01-7700 **cromato****Art. 7700/E**
Parti esterne per miscelatore incasso c/ pulsante 2 OUT
External parts for built-in single lever mixer with diverter pulse 2 OUT
01-7700/E **cromato****Art. 104002°**
Corpo incasso c/ pulsante 2 OUT attacchi ingresso acqua da 1/2"
Built-in part with diverter pulse 2 OUT with 1/2" water connection
01-104002 **cromato**

° compatibile con tutte le collezioni escluso tutti i Funtanin e tutti gli F-vogue
 ° suitable for all collections except all articles of the Funtanin and F-vogue serie

Art. 7703/2/1


Deviatore incasso completo due uscite
Complete two ways built-in diverter
01-7703/2/1 **cromato**

**Art. 7703/2/1/E**

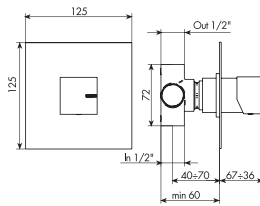
Parti esterne per deviatore incasso completo due uscite
External parts for complete two ways built-in diverter

01-7703/2/1/E cromato

Art. 914016

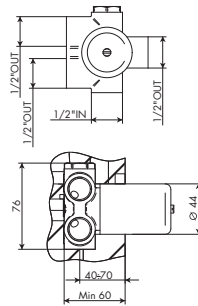
Parti incasso per deviatore completo due uscite
Built-in parts for complete two ways diverter

914016

Art. 7703/3/1**Deviatore incasso completo tre uscite**

Complete three ways built-in diverter

01-7703/3/1 cromato

**Art. 7703/3/1/E**

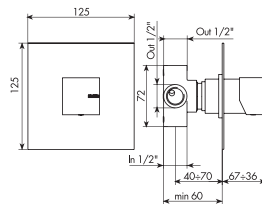
Parti esterne per deviatore incasso completo tre uscite
External parts for complete three ways built-in diverter

01-7703/3/1/E cromato

Art. 034127

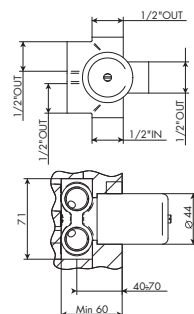
Parti incasso per deviatore completo tre uscite
Built-in parts for complete three ways diverter

034127

Art. 7703/4/1**Deviatore incasso completo quattro uscite**

Complete four ways built-in diverter

01-7703/4/1 cromato

**Art. 7703/4/1/E**

Parti esterne per deviatore incasso completo quattro uscite
External parts for complete four ways built-in diverter

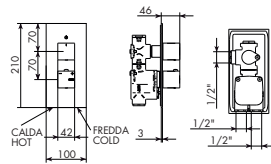
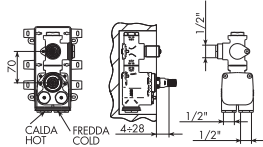
01-7703/4/1/E cromato

Art. 034128

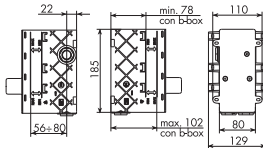
Parti incasso per deviatore completo quattro uscite
Built-in parts for complete four ways diverter

034128

Art. 0912/P


Miscelatore incasso termostatico 1 OUT bassa portata
Built in thermostatic mixer 1 OUT less rate
01-0912/P **cromato**

Art. 0912/H/P/E

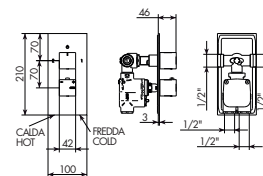
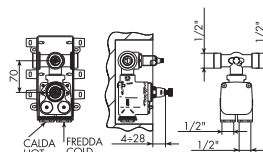
Parti esterne per miscelatore incasso termostatico 1 OUT
External parts for built in thermostatic mixer 1 OUT
01-0912/H/P/E **cromato**

Art. 484020

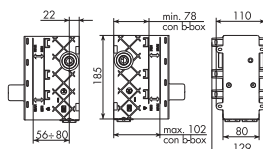
Parti incasso per miscelatore incasso termostatico 1 OUT bassa portata
Built in parts for thermostatic mixer 1 OUT less rate

484020

Art. 0912/2/P


Miscelatore incasso termostatico 2 OUT bassa portata
Built in thermostatic mixer 2 OUT less rate
01-0912/2/P **cromato**

Art. 0912/2/P/E

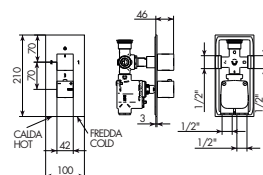
Parti esterne per miscelatore incasso termostatico 2 OUT bassa portata
External parts for built in thermostatic mixer 2 OUT less rate
01-0912/2/P/E **cromato**

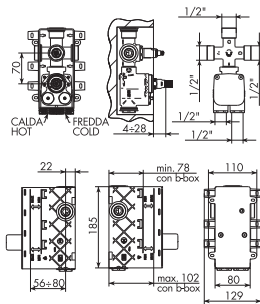
Art. 484021

Parti incasso per miscelatore incasso termostatico 2 OUT bassa portata
Built in parts for thermostatic mixer 2 OUT less rate

484021

Art. 0912/3/P


Miscelatore incasso termostatico 3 OUT bassa portata
Built in thermostatic mixer 3 OUT less rate
01-0912/3/P **cromato**



Art. 0912/3/P/E

Parti esterne per miscelatore incasso termostatico 3 OUT bassa portata
External parts for built in thermostatic mixer 3 OUT less rate

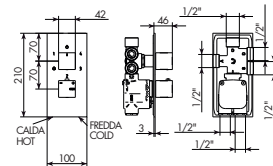
01-0912/3/P/E **cromato**

Art. 484022

Parti incasso per miscelatore incasso termostatico 3 OUT bassa portata
Built in parts for thermostatic mixer 3 OUT less rate

484022

Art. 0912/4/P



Miscelatore incasso termostatico 4 OUT bassa portata

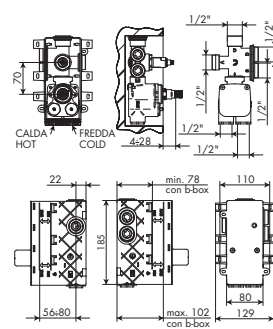
Built in thermostatic mixer 4 OUT less rate

01-0912/4/P **cromato**

Art. 0912/4/P/E

Parti esterne per miscelatore incasso termostatico 4 OUT bassa portata
External parts for built in thermostatic mixer 4 OUT less rate

01-0912/4/P/E **cromato**

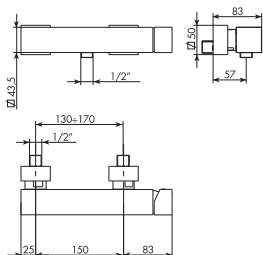


Art. 484023

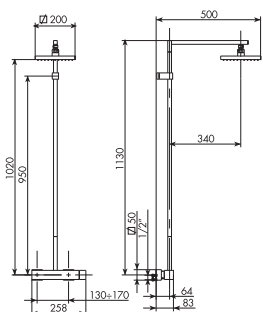
Parti incasso per miscelatore incasso termostatico 4 OUT bassa portata
Built in parts for thermostatic mixer 4 OUT less rate

484023

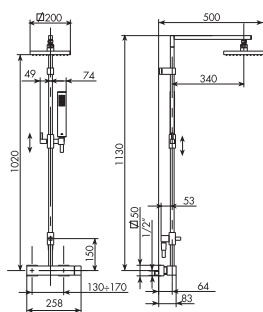
Art. 7709/1

**Miscelatore esterno per doccia s/duplex completo***Exposed single lever mixer for shower without complete shower kit*01-7709/1 **cromato**

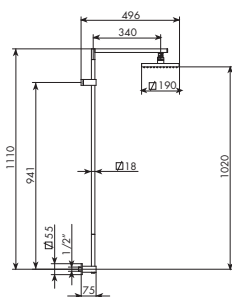
Art. 7709/4

**Miscelatore esterno per doccia c/stelo e soffione piatto***Exposed single lever mixer for shower with flat shower head and pipe*01-7709/4 **cromato**

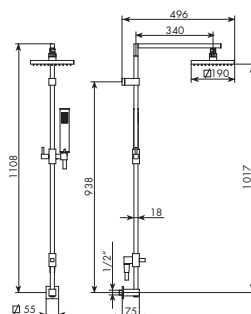
Art. 7709/5/1

**Miscelatore esterno per doccia c/stelo e soffione piatto, c/deviatore e scorrevole**
*Exposed shower mixer with high shower plate with sliding shower kit and flat shower head*01-7709/5/1 **cromato**

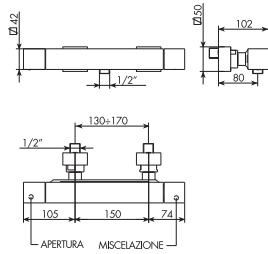
Art. 6513/4

**Curva presa d'acqua per doccia c/stelo e soffione***Water connector for high shower plate and pipe*01-6513/4 **cromato**

Art. 7513/5/1

**Curva presa acqua per doccia c/stelo e soffione, c/deviatore e scorrevole***Water connector for high shower plate with sliding shower kit and shower head*01-7513/5/1 **cromato**

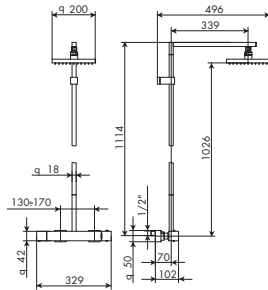
Art. 7711/1



Miscelatore termostatico esterno per doccia s/duplex completo
Exposed thermostatic mixer for shower without complete shower kit

01-7711/1 cromato

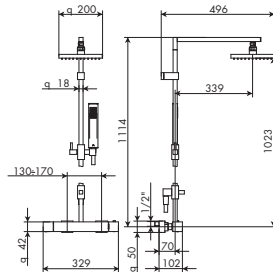
Art. 7711/4



Miscelatore termostatico esterno per doccia c/stelo e soffione
Exposed thermostatic mixer for shower with shower head and pipe

01-7711/4 cromato

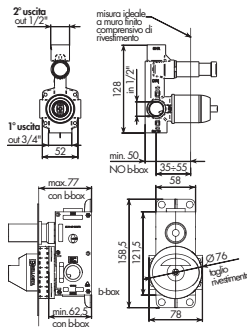
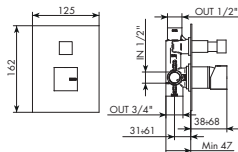
Art. 7711/5/1



Miscelatore termostatico esterno per doccia c/stelo e soffione c/deviatore e scorrevole
Exposed thermostatic mixer for shower with sliding shower kit and shower head

01-7711/5/1 cromato

Art. 7700



Miscelatore incasso c/ pulsante 2 OUT
Built-in single lever mixer with diverter pulse 2 OUT

01-7700 **cromato**

Art. 7700/E

Parti esterne per miscelatore incasso c/ pulsante 2 OUT
External parts for built-in single lever mixer with diverter pulse 2 OUT

01-7700/E **cromato**

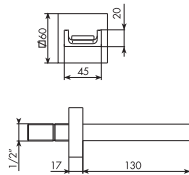
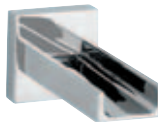
Art. 104002°

Corpo incasso c/ pulsante 2 OUT attacchi ingresso acqua da 1/2"
Built-in part with diverter pulse 2 OUT with 1/2" water connection

01-104002 **cromato**

° compatibile con tutte le collezioni escluso tutti i Funtanin e tutti gli F-vogue
 ° suitable for all collections except all articles of the Funtanin and F-vogue serie

Art. 7703



Bocca erogazione a muro per vasca

Wall spout for bath

01-7703 **cromato**

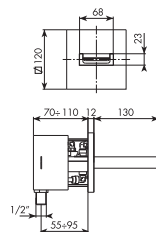
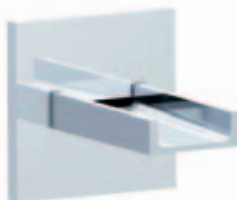
IMPORTANTE SPECIFICA TECNICA:

Portata massima 5L/min.

IMPORTANT TECHNICAL INFORMATION:

Maximum flow rate 5 L/min.

Art. 7703/AP



Bocca erogazione a muro ad alta portata per vasca

High flow rate wall spout for bath

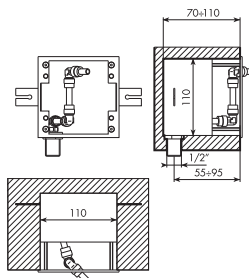
01-7703/AP **cromato**

IMPORTANTE SPECIFICA TECNICA:

La bocca erogazione prevede una parte incasso art. 774012 che richiede uno spessore minimo di 70 mm.

IMPORTANT TECHNICAL INFORMATION:

The spout is linkable with a built in part code 774012 that required a mininum thickness of 70 mm.



Art. 774011

Parti esterne per bocca incasso vasca

External parts for built-in bath spout

01-774011 **cromato**

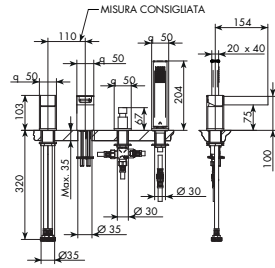
Art. 774012

Parti incasso per bocca vasca con attacco ingresso acqua da 1/2"

Built-in bath spout parts with water connection 1/2"

01-774012 **cromato**

Art. 7701/2/A

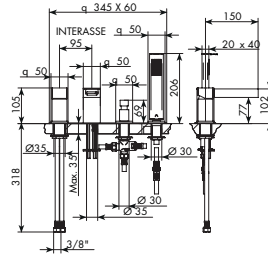


Miscelatore per bordo vasca 4 fori
4 holes bath mixer to be fitted on bath rim

01-7701/2/A **cromato**

! PREDISPOSIZIONI per bordo vasca, art. 012/4, 012/6 e 012/7, vedi pag. 769
! PRESYSTEM for exposed bath, art. 012/4, 012/6 and 012/7, see page 769

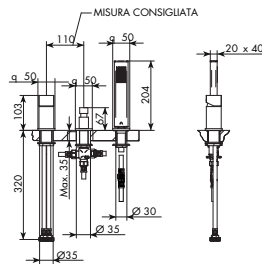
Art. 7701/2/P/A



Miscelatore per bordo vasca 4 fori su piastra
4 holes bath mixer on plate to be fitted on bath rim

01-7701/2/P/A **cromato**

Art. 7701/20/A

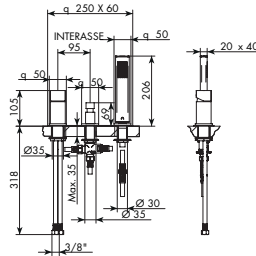


Miscelatore per bordo vasca 3 fori s/bocca erogazione
3 holes bath mixer without spout to be fitted on bath rim

01-7701/20/A **cromato**

! PREDISPOSIZIONI per bordo vasca, art. 012/3, 012/6 e 012/7, vedi pag. 769
! PRESYSTEM for exposed bath, art. 012/3, 012/6 and 012/7, see page 769

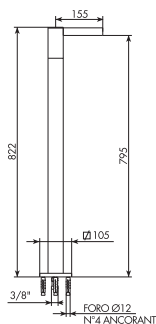
Art. 7701/20/P/A



Miscelatore per bordo vasca 3 fori su piastra s/bocca erogazione
3 holes bath mixer on plate without spout to be fitted on bath rim

01-7701/20/P/A **cromato**

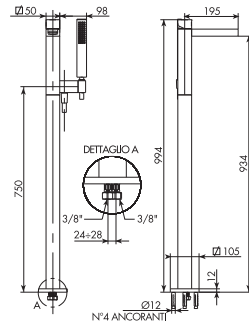
Art. 7701/26



Bocca erogazione da pavimento per vasca
Floor spout for bath

01-7701/26 **cromato**

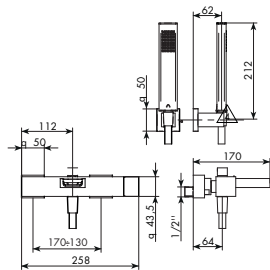
Art. 7701/4



Miscelatore per vasca c/attacco a pavimento c/bocca erogazione
Single lever mixer for bath with floor spout

01-7701/4 **cromato**

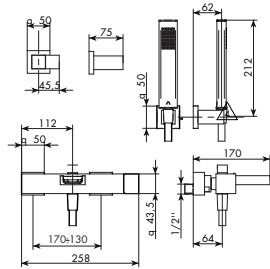
Art. 7701/A



Miscelatore esterno per vasca c/gancio fisso completo
Exposed single lever mixer for bath with complete shower kit (fixed hook)

01-7701/A **cromato**

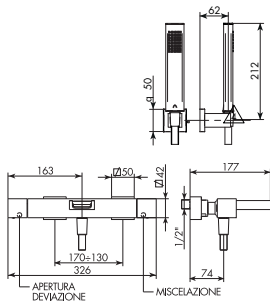
Art. 7701/B



Miscelatore esterno per vasca c/gancio fisso completo e duplex
Exposed single lever mixer for bath with complete shower kit (fixed hook) and movable hook

01-7701/B **cromato**

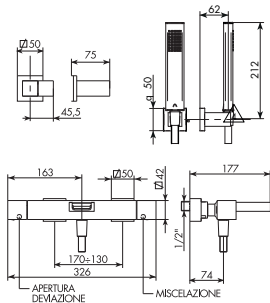
Art. 7701/A/TRM



Miscelatore TERMOSTATICO esterno per vasca c/gancio fisso completo
THERMOSTATIC exposed bath mixer for bath with complete shower kit (fixed hook)

01-7701/A/TRM **cromato**

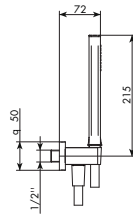
Art. 7701/B/TRM



Miscelatore TERMOSTATICO esterno per vasca c/gancio fisso completo e duplex
THERMOSTATIC exposed bath mixer for bath with complete shower kit (fixed hook) and movable hook

01-7701/B/TRM **cromato**

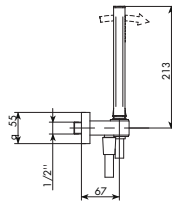
Art. 7503/1/A



Gancio incasso fisso completo
Complete shower kit (fixed hook)

01-7503/1/A **cromato**

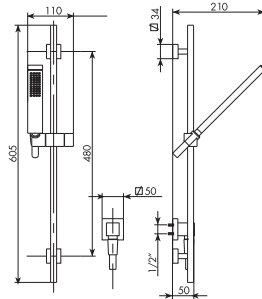
Art. 7503/1



Duplex incasso completo
Complete shower kit (movable hook)

01-7503/1 **cromato**

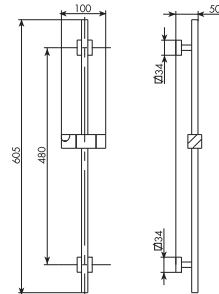
Art. 7730



Saliscendi completo c/presa d'acqua
Complete wall pipe with water connection

01-7730 **cromato**

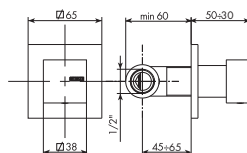
Art. 7730/1



Saliscendi
Wall pipe

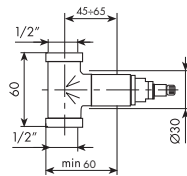
01-7730/1 **cromato**

Art. 7708/D



Rubinetto incasso da 1/2" destro
Right built-in stop cock 1/2"

01-7708/D **cromato**



Art. 7708/E

Parti esterne rubinetto incasso c/leva

Exposed parts of built-in tap with lever

01-7708/E **cromato**

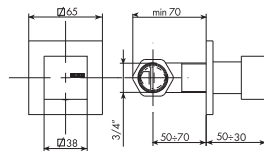
Art. 054025

Corpo incasso 1/2" vitone corto destro

Right built-in part with 1/2" short valve

054025

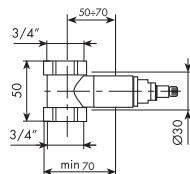
Art. 7708/1/D



Rubinetto incasso da 3/4" destro

Right built-in stop cock 3/4"

01-7708/1/D **cromato**



Art. 7708/E

Parti esterne rubinetto incasso c/leva

Exposed parts of built-in tap with lever

01-7708/E **cromato**

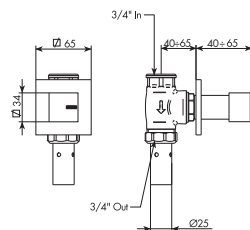
Art. 054027

Corpo incasso 3/4" vitone corto destro

Right built-in part with 3/4" short valve

054027

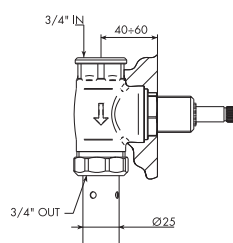
Art. 7740



Passo rapido da 3/4"

Built-in rapid flow cock 3/4"

01-7740 **cromato**



Art. 7740/E

Parti esterne per passo rapido

External parts for built-in rapid flow cock

01-7740/E **cromato**

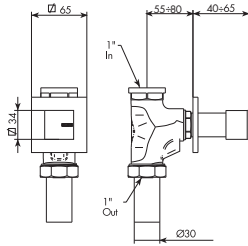
Art. 884053

Parti incasso per passo rapido da 3/4"

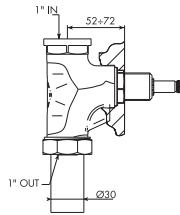
Built-in parts for rapid flow cock 3/4"

884053

Art. 7740/1



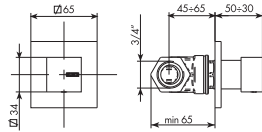
Passo rapido da 1"
Built-in rapid flow cock 1"
 01-7740/1 **cromato**



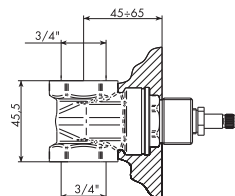
Art. 7740/E
Parti esterne per passo rapido
External parts for built-in rapid flow cock
 01-7740/E **cromato**

Art. 884054
Parti incasso per passo rapido da 1"
Built-in parts for rapid flow cock 1"
 884054

Art. 7732/2

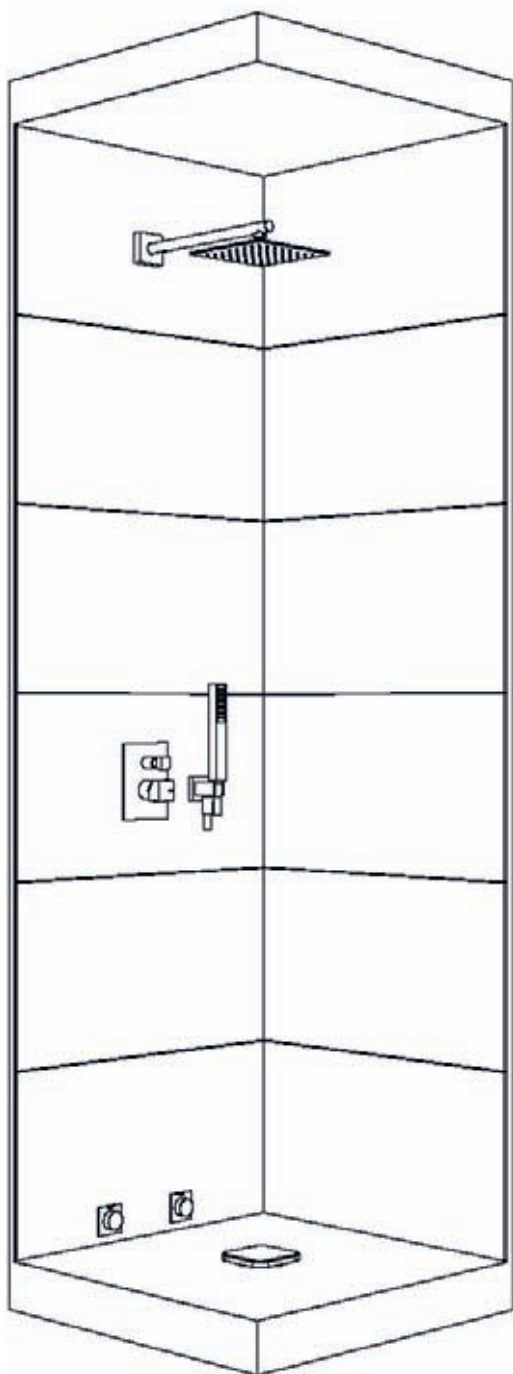


Saracinesca da 3/4"
Gate valve 3/4"
 01-7732/2 **cromato**



Art. 7732/2/E
Parti esterne per saracinesca da 3/4" completa
External parts for complete gate valve 3/4"
 01-7732/2/E **cromato**

Art. 035212
Parti incasso per saracinesca da 3/4" completa
Built-in parts for complete gate valve 3/4"
 035212



Per dettagli tecnici, vedi pag. 174
For technical details, see page 174

ARTICOLO	QUANTITA'
01-7700	1
01-6503/1/A	1
78-754076	1
01-754088	1
01-7716	1
01-0920/2	2
TOTALE	

MANIGLIE	DESCRIZIONE	PER ART.	PAG. 886/901
Art. 774014	Maniglia miscelatore completa x cartuccia Ø35 <i>Complete handle for cartridge Ø35 for mixer</i>	7700, 7701/2/A, 7701/2/P/A, 7701/20/A, 7701/20/P/A, 7705/R/A, 7705/R/B, 7705/3, 7705/3/A, 7721	
Art. 774015	Maniglia miscelatore completa per cartuccia Ø25 <i>Complete mix handle for Ø25 cartridge</i>	7705/7/S, 7705/P/S, 7705/P/S/T	
Art. 774016	Maniglia miscelatore completa per cartuccia Ø35 per vasca esterni <i>Complete exposed bath mix handle for Ø35 cartridge</i>	7701/A, 7701/B, 7709/1, 7709/4, 7709/5/1	
Art. 774017	Maniglia per deviatori incasso completa <i>Complete handle for built-in diverter</i>	7703/2/1, 7703/3/1, 7703/4/1	
Art. 774018	Maniglia miscelatore completa per cartuccia Ø35 per vasca a pavimento <i>Complete floor bath mix handle for Ø35 cartridge</i>	7701/4	
Art. 774019	Maniglia per vitoni incasso completa <i>Complete handle for ceramic built-in valve</i>	7708/D, 7708/1/D	
Art. 774020	Maniglia passo rapido BE completa <i>Complete handle for rapid flow cock</i>	7740, 7740/1	
Art. 774021	Maniglia per saracinesca BE completa <i>Complete handle for gate valve</i>	7732/2	
Art. 774027	Maniglia completa per deviatore vasca termostatico esterno <i>Complete lever for thermostatic exposed bath diverter</i>	7701/A/TRM, 7701/B/TRM	
Art. 774028	Maniglia completa per miscelatore vasca termostatico esterno <i>Complete lever for thermostatic bath mixer</i>	7701/A/TRM, 7701/B/TRM, 7711/1, 7711/4, 7711/5/1	
Art. 774029	Maniglia per term inc completa x cartuccia Ø34.4 <i>Complete handle for cartridge Ø34.4 for built-in thermostatic mixer</i>	7711/1, 7711/4, 7711/5/1	
Art. 774037	Maniglia x termostatico incasso completa x cartuccia Ø34.4 <i>Complete handle for cartridge Ø34.4 for built-in</i>	0912/P, 0912/2/P, 0912/3/P, 0912/4/P	
Art. 774043	Maniglia x rubinetto incasso alta portata completa <i>Complete handle for built-in tap high flow rate</i>	0912/P, 0912/2/P, 0912/3/P, 0912/4/P	
DOCCHETTE			PAG. 902
Art. 755003	Doccetta rettangolare monogetto <i>Rectangular monojet shower handset</i>		
FLESSIBILI			PAG. 903
Art. 805029	Flessibile 1/2" F conico x 3/8" F zigrinato L 150 cm <i>Hose 1/2" f conical x 3/8" f knurled length cm 150</i>		
Art. 915003	Flessibile 1/2" F conico x 1/2" F conico L 150 cm <i>Hose 1/2" f x 1/2" f conical length cm 150</i>		
Art. 915020	Flessibile 1/2" F conico x 1/2" F conico L 200 cm <i>Hose 1/2" f x 1/2" f conical length cm 200</i>		
GANCI INCASSO E PRESE D'ACQUA			PAG. 904/905
Art. 654043	Gancio incasso fisso quadro <i>Square built-in fixed hook</i>	7503/1/A	
Art. 655006	Presa d'acqua quadra <i>Square water connection</i>	7730	
Art. 655012	Gancio incasso duplex quadro <i>Square built-in movable hook</i>	7503/1	
GANCI ESTERNI			PAG. 906/907
Art. 654044	Gancio esterno fisso quadro <i>External square fixed hook</i>	7701/A, 7701/B, 7701/A/TRM, 7701/B/TRM	
Art. 655005	Gancio esterno duplex quadro <i>External square movable hook</i>	7701/B, 7701/B/TRM	

DEVIATORI	DESCRIZIONE	PER ART.	PAG. 908/910
Art. 035344	Cartuccia dev bassa portata 4 OUT trasp completa <i>4 OUT diverter no colour small flow rate cartridge</i>	7703/4/1, 0912/4/P	
Art. 035345	Cartuccia dev bassa portata gialla 3 OUT completa <i>3 OUT diverter yellow small flow rate cartridge</i>	7703/3/1, 0912/3/P	
Art. 035346	Cartuccia dev rossa 2 uscite completa di fondello <i>Diverter red cartridge at 2 ways with crotch</i>	7702/2/1, 0912/2/P, 7701/A/TRM, 7701/B/TRM	
Art. 105029	Valvola dev. mix incasso vasca <i>Diverter valve for built-in bath mixer</i>	7700	
Art. 655070	Valvola deviatore stelo quadro CAL completa <i>Complete square CAL diverter valve</i>	7711/1, 7711/4, 7711/5/1	
Art. 754009	Valvola deviatore completa <i>Complete diverter valve</i>	7701/A, 7701/B	
Art. 755058	Cartuccia deviatrice Ø35 <i>Diverter cartridge</i>	7701/4	

PROLUNGHE			PAG. 911/912
Art. 104006	Kit prolunga 2 cm (bicc + dev + cil.dev + spes) <i>Extension kit cm 2 (seat + diverter + diverter roll + thickness)</i>	7700	
Art. 104007	Kit prolunga 3 cm (bicc + dev + cil.dev + spes) <i>Extension kit cm 3 (seat + diverter + diverter roll + thickness)</i>	7700	
Art. 104008	Kit prolunga 4 cm (bicc + dev + cil.dev + spes) <i>Extension kit cm 4 (seat + diverter + diverter roll + thickness)</i>	7700	
Art. 104009	Kit prolunga 2 cm (bicchiere + spessore) <i>Extension kit cm 2 (seat + thickness)</i>	7705/R/B, 7705/3, 7705/3/A, 7721	
Art. 104010	Kit prolunga 3 cm (bicchiere + spessore) <i>Extension kit cm 3 (seat + thickness)</i>	7705/R/B, 7705/3, 7705/3/A, 7721	
Art. 104011	Kit prolunga 4 cm (bicchiere + spessore) <i>Extension kit cm 4 (seat + thickness)</i>	7705/R/B, 7705/3, 7705/3/A, 7721	
Art. 484042	Asta brocciata Ø8z24 per deviatori con vite <i>Broaching rod Ø8z24 for diverter with screw</i>	0912/2/P, 0912/3/P, 0912/4/P	
Art. 774054	Asta brocciata Ø8z20 c/vite <i>Broaching rod Ø8z20 with screw</i>	0912/P, 0912/2/P, 0912/3/P, 0912/4/P	
Art. 774055	Asta brocciata Ø8z24 c/vite <i>Broaching rod Ø8z24 with screw</i>	0912/P	

PIASTRE E FERMAPIASTRE			PAG. 913/917
Art. 046042	Piastra 3 fori bordovasca (250 x 60) <i>Three holes plate (250 x 60) for bath rim</i>	7701/20/P/A	
Art. 046044	Piastra 4 fori bordovasca (345 x 60) <i>Four holes plate (345 x 60) for bath rim</i>	7701/2/P/A	
Art. 484027	Ferma piastra deviatori completa <i>Stop diverter complete plate</i>	0912/2/P, 0912/3/P, 0912/4/P	
Art. 484032	Piastra 100x210 completa per term incasso 2 OUT <i>Complete plate 100x210 2 OUT built-in thermostatic</i>	0912/2/P	
Art. 484033	Piastra 100x210 completa per term incasso 3 OUT <i>Complete plate 100x210 3 OUT built-in thermostatic</i>	0912/3/P	
Art. 484037	Piastra 100x210 completa per term incasso 4 OUT <i>Complete plate 100x210 4 OUT built-in thermostatic</i>	0912/4/P	
Art. 654007	Piastra 125 x 162,5 incasso c/anelli + guarn <i>Wall plate 125 x 162.5 with rings and gaskets</i>	7700	
Art. 654009	Piastra 125 x 125 1 foro c/anello + guarn <i>Single hole 125 x 125 wall plate with ring and gasket</i>	7721	
Art. 754035	Rosone per rubinetto a muro, passi rapidi e saracinesca completo <i>Complete wall tap rose window for rapid flow cock and gate valve</i>	7708/D, 7708/1/D, 7732/2, 7740, 7740/1	

PIASTRE	DESCRIZIONE	PER ART.	PAG. 913/917
Art. 774022	Piastra 2 fori 95x220 c/anelli + guarnizioni <i>Two-holes 95x220 wall plate with rings and gaskets</i>	7705/3/A	
Art. 774041	Piastra 100x210 completa per termostatico incasso 1 OUT <i>Complete plate 100x210 1 OUT built-in thermostatic</i>	0912/P	
Art. 774044	Ferma piastra rubinetti completa <i>Stop tap complete plate</i>	0912/P	
BASETTE			PAG. 918/919
Art. 754011	Basetta 50 + OR <i>Base 50 with O'rings</i>	7701/2/A, 7701/2/P/A, 7701/20/A, 7701/20/P/A, 7705/R/A	
Art. 774023	Basetta lavabo/bidet 50 + OR <i>Basin/bidet base 50 with O'rings</i>	7705/7/S, 7705/P/S, 7705/1/A, 7705/1/B, 7705/1/C	
BOCCHE			PAG. 924/928
Art. 774024	Bocca erogazione lavabo a muro completa <i>Complete wall spout</i>	7705/3	
COPRI CARTUCCE			PAG. 929/932
Art. 106005	Copricartuccia per Ø35 <i>Retaining ring for Ø35 cartridge</i>	7700, 7701/2/A, 7701/2/P/A, 7701/20/A, 7701/20/P/A, 7701/4, 7701/A, 7701/B, 7705/3, 7705/3/A, 7705/R/A, 7705/R/B, 7709/1, 7709/4, 7709/5, 7721	
Art. 774025	Copricartuccia per Ø25 completo BE <i>Complete retaining ring for Ø25 cartridge</i>	7705/7/S, 7705/P/S, 7705/P/S/T	
CARTUCCE CARTUCCE TERMOSTATICHE			PAG. 933/935
Art. 444021	Cartuccia Ø25 s/dist <i>Cartridge Ø25 without filling device</i>	7705/7/S, 7705/P/S, 7705/P/S/T	
Art. 025002	Cartuccia Ø35 s/dist <i>Cartridge Ø35 without filling device</i>	7700, 7701/2/A, 7701/2/P/A, 7701/20/A, 7701/20/P/A, 7701/4, 7701/A, 7701/B, 7705/3, 7705/3/A, 7705/R/A, 7705/R/B, 7709/1, 7709/4, 7709/5/1, 7721	
Art. 774045	Gruppo valvola non ritorno c/filtro completo <i>No return group valve with filter complete</i>	0912/P, 0912/2/P, 0912/3/P, 0912/4/P	
Art. 775006	Cartuccia per miscelatore termostatico Ø27 <i>Thermostatic mixer cartridge Ø27</i>	7701/A/TRM, 7701/B/TRM, 7711/1, 7711/4, 7711/5/1	
Art. 775007	Cartuccia per mix incasso termostatico Ø34.4 <i>Built-in thermostatic cartridge Ø34.4</i>	0912/P, 0912/2/P, 0912/3/P, 0912/4/P	
Art. 776082	Fermo sicurezza x maniglia termostatico <i>Safe stop for lever thermostatic</i>	0912/P, 0912/2/P, 0912/3/P, 0912/4/P	
VITONI			PAG. 936/937
Art. 055004	Vitone corto destro a dischi ceramici <i>Short right ceramic disc valve</i>	7708/D, 7708/1/D, 7711/1, 7711/4, 7711/5/1	
Art. 055134	Vitone corto forato destro 3/4" a dischi ceramici <i>Right ceramic 3/4" valve with threaded fixation hole by ceramic disc</i>	0912/P	
Art. 884021	Vitone tradizionale per passo rapido MO <i>Traditional valve for rapid flow cock</i>	7740, 7740/1	